

Volunteering at Tynehead

Does working with Salmon and the environment appeal to you? Interested in the possibilities of volunteering with the Hatchery?

What Do Volunteers Do?

- Brood Stock Capture – September to November
- Egg Takes – October to November
- Egg Picking – January to March
- Clean and Feeding of Fry – January to June
- Teaching /touring groups fall & spring
- Maintenance / Construction – all year
- Fundraising – all year
- Event Planning – September to June
- Web page maintenance, etc. - all year

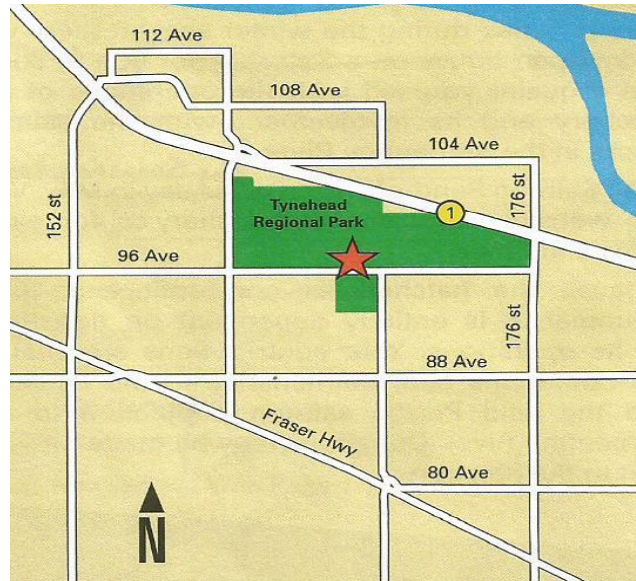
Contact by e-mail for more information

tyneheadhatcheryvolunteers@gmail.com

Donations

The hatchery is non-profit and 100% volunteer run. It is dependent on donations from all members of the community to be able to operate. 100% of all donations go directly to operating and maintaining the hatchery.

Donations can be made directly at the hatchery or mailed. Tax receipts can be issued.



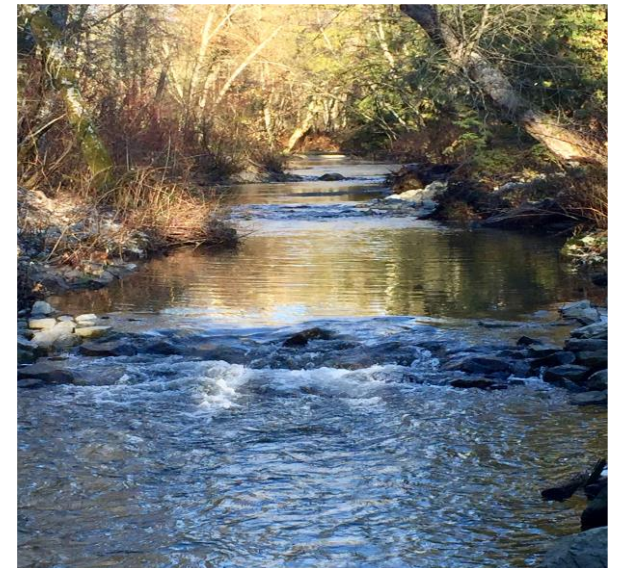
Physical Address: 16585 – 96 Avenue

Mailing Address: PO Box 35042
409-15940 Fraser Hwy
Surrey, B.C. V4N 9E9

Phone: 604-589-9127



TYNEHEAD HATCHERY



Operated by the
**Serpentine Enhancement
Society**
www.tyneheadhatchery.ca



OUR HATCHERY

The Tynehead Hatchery is located by the Serpentine River in the Tynehead Regional Park. The Serpentine River starts under the Guildford Shopping Mall and empties into the ocean in Mud Bay

The Hatchery is operated by the Serpentine Enhancement Society (SES). SES is a non-profit, 100% volunteer run society that started in 1985. The Hatchery buildings were built in 1988.

The Hatchery raises three species of salmon: Chinook, Chum and Coho. All these salmon come up the Serpentine River from the ocean to spawn (lay their eggs). We release around 250,000 salmon back into the Serpentine River each year.

School Visits & Hatchery

The hatchery is involved with the Surrey Schools in the "Salmon in the Classroom" program. School children receive Coho eggs from the Hatchery and raise them in their classroom. When the eggs turn to fry, the children come to the hatchery for a class tour and to release their fry back into the Serpentine River.

Groups & Individual Visits

The Hatchery welcomes visits by any community group or individuals.

The Hatchery is 100% volunteer run. So, the hatchery gates are only open when volunteers are on site. For a guaranteed opening, come down on Wednesday or Saturday mornings between 9:30 am and 11:30 am throughout the year.



For further information phone
604-589-9127

Protect the Serpentine Watershed

Healthy streams are very important for us to have healthy fish. Harmful activities by humans in and around our streams and storm drains can cause harm to both fish and our environment.

Ways you can help protect the watershed

- Don't pour toxic household chemicals down the drain; take them to your local hazardous waste center
- Do not drain your swimming pool or hot tub into a storm drain - chlorinated water kills salmon
- Do not use chemical fertilizers or pesticides. They enter the soil and leak into the streams and kill salmon
- Maintain and restore natural plants at the sides of the streams. Trees and bushes keep the water cool for the salmon, regulate stream water flow, and stop erosion of stream banks

